



Wireless Surveillance Camera

IP300

USER MANUAL



Questions?
Need some help?
This guide will help you
enjoy your new product



or visit
www.polaroid.com



For more information
consult the user
manual on the
included CD-ROM

Table of Contents

Welcome	3
1.1 Features	3
1.2 Packing List	4
1.3 Product Views	4
1.4 PC System Requirements	6
1.5 Hardware Instruction	7
1.6 Software Installation	8
2 Software Operation	10
2.1 IP Camera Tool	10
2.2 CAMERA LOGIN	14
2.3 TO USE IE BROWSER TO GAIN ACCESS	17
2.4 SAFARI, FIREFOX, GOOGLE CHROME BROWSER ACCESS	20
2.5 MOBILE PHONE ACCESS	21
2.6 ACTIVEX MODE FOR IE BROWSER ACCESS	22
2.7 VISITOR STATUS	22
2.8 OPERATOR ACCESS	25
ADMINISTRATOR ACCESS	28
3 ADMINSTRATOR SETTINGS	28
3.1 MULTI-DEVICE SETTINGS	29
3.2 Network Settings	32
3.3 Basic Network Settings	33
3.4 Wireless LAN Settings	35
3.5 ADSL Settings	37
3.6 UPnP Settings	37
3.7 DDNS Service Settings	37
3.8 System Settings	43
3.8.1 Device Info	43
3.9 Alias Settings	44
3.10 Date & Time Settings	44
3.11 User Settings	44
3.12 PT Settings	45
3.13 Indicator Settings	46
3.14 Backup and Restore	46
3.15 Other Settings	48
3.16 Mail Service Settings	48
3.17 FTP Service Settings	50
3.18 Alarm Settings	51
3.19 Send Mail on Alarm	55
3.20 Path Settings	56
3.21 Server Push Mode (for Safari, FireFox, Google Browser)	58
3.22 Sign in mobile phone	59
FREQUENTLY ASKED QUESTIONS.	60

Welcome

You have purchased the *Polaroid* IP Camera solution because security is extremely important to you.

So important, in fact, you have chosen a high quality video camera so easy to install you can do it yourself. Once you do, you will be able to transmit powerful clear images into the Cloud and monitor them from any digital device, including your smart phone. *Polaroid* IP cameras transmit high quality video content at 30fps on the LAN/WAN utilizing MJPEG hardware compression technology. Based on TCP/IP standard, every *Polaroid* IP camera contains a built-in server which supports popular browser systems. Management and maintenance of your security device can be done simply right over the network. You can e-configure, start-up and even upgrade firmware in seconds. The net benefit is you can now monitor your home or business anywhere in the world from anywhere you happen to be.

Welcome to the new security. Welcome to *Polaroid* IP Security Camera systems.

PLEASE NOTE: WE MAINTAIN A HOTLINE TO PROVIDE BOTH CUSTOMER SERVICE AND INSTALLATION GUIDANCE. THE NUMBER IS 1-877-836-1190

1.1 Features

- Powerful high-speed video protocol processor
- High-sensitivity 1/4" CMOS sensor
- 300k pixel picture quality
- Supports PT control; Pan 320 degrees, Tilt 120 degrees
- IR Cut Filter for better visual clarity.
- Optimized MJPEG video compression for transmission
- Multi-level user management and password definition
- Embedded web server to enable IE visitation
- Supports wireless network (Wi-Fi/802.11/b/g)
- Supports Dynamic IP (DDNS) and UPnP LAN and Internet (ADSL, Cable Modem)
- Built in Speaker
- Motion detection alarm
- Provides image snapshot
- Supports multiple protocols: HTTP/TCP/IP/UDP/SMTP/DDNS/SNTP/DHCP/FTP
- Supports WEP/WPA/WPA2 encryption
- Supports 3G phone, Smart phone control and surveillance
- Supports Internet Explorer, Firefox, Safari, Google Chrome browsers

1.2 Packing List

After unpacking, check that the following items are in your possession:

ITEM:	QUANTITY
* IP Camera	(1)
* WI-FI Antenna	(1) (only available for wireless models)
* User Manua	(1)
* DC Power Supply	(1)
* CD	(1)
* Network Cable	(1)

NOTE: If any items are missing, contact *Polaroid* immediately at 1-877-836-1190

1.3 Product Views

1.3.1 Front View



Figure: 1.1

1. Light Sensor Holes
2. Infrared LEDs: 16
3. LENS: CMOS sensor with fixed focus lens (Default is 3.6mm, optional 6mm available)
4. Network Indicator LED; blinks when in use

5. Built-in microphone
6. Speaker
7. Wireless Antenna

1.3.2 Rear Panel

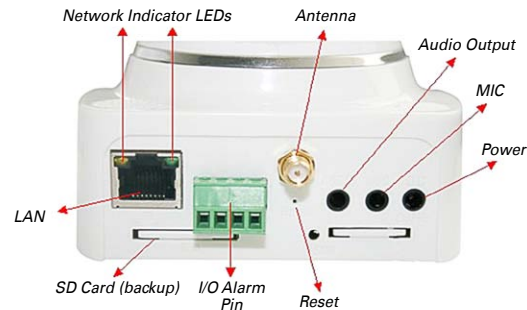


Figure: 1.2

1. LAN: RJ-45/10-100 base T
2. Power Supply: DC 5V/2A
3. Network Lights: Glows green when connected to network, yellow when transmitting data
4. Audio Output: for external speaker
5. MIC jack for external microphone
6. I/O PINS: 1) Output A; 2) Output B; 3) Alarm input; 4) Ground Input
7. SD CARD/SIM CARD Slot: Not available for this particular MJPEG camera
8. RESET Button: to reset IPCAM to factory default parameter, press reset down and hold for 15 seconds (keep power on when resetting camera).

1.3.3 Bottom View



Figure 1.3

Beware: If your camera does not include several stickers, such as MAC address and QC sticker, it could be a fake IPCAM and will not work with original firmware or be able to be serviced by our after sales service. Make sure it has the MAC address and serial number.

1.4 PC System Requirements

System configuration requirements for viewing multiple IPCAM camera feeds:

CPU:	2.06 GHz or above
Memory capacity:	256M or above
Network card:	10M or above
Display card:	64M or above memory
Recommended OS:	Windows 2000/XP/Vista 7

1.5 Hardware Instruction

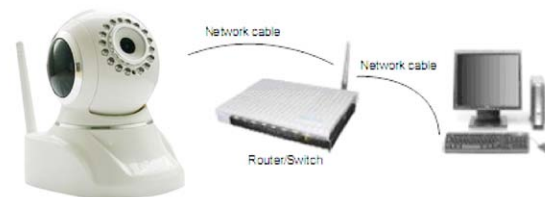


Figure 1.4

To set up your camera hardware, follow each of the following steps carefully to ensure optimum camera operation:

1. Install WI-FI antenna
2. Plug power adaptor into camera
3. Connect network cable into both camera and into router for initial set-up (initial set-up is not over WiFi; please keep network cable inserted during initial set-up. Later., when you have established your camera on your wireless network, the hard wire from the camera to the router may be removed, see section 3.4. It should, however, remain connected during initial setup.)
4. Note: it takes approximately 30 seconds for camera to boot; once this is done, find the "IP address" in IP CAMERA TOOLS (see Figure 2.1)
5. Note: Once the proper software is installed and once both power and network cables are connected to the camera unit, an led indicator should glow green steadily to indicate the camera is now on. Later, when you establish your wireless internet connections, an LED will flash yellow to indicate when the camera is transmitting to the Cloud. Please note that the proper software must be installed for these LEDs to function properly! SEE NEXT SECTION FOR SOFTWARE INSTALLATION.

1.6 Software Installation

IMPORTANT: Before installing the Active X software to run your camera, make certain both your Firewall and Anti-Virus are shut off. It is safe to do so and this will ensure the software installs properly and without interference. Next:

IP CAMERATOOL. The IP CAMERATOOL is included in the CD that comes with your camera. Insert the CD into your computer. Double click on IPCamASetup.exe icon then click on Next (follow the prompts as they are shown in figures 1.6/1.7/1.8)

2. **ActiveX :** Double click Appinstall.exe; when prompted, click on next, then click on Install and then click on Finish. Upon completion of all software, an IP Camera tool icon will appear on your computer desktop.



Figure 1.5



Figure 1.6

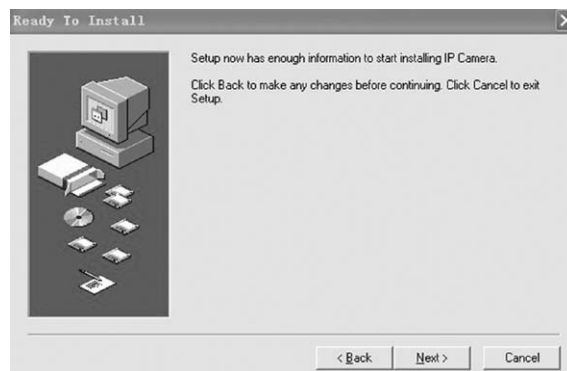


Figure 1.7

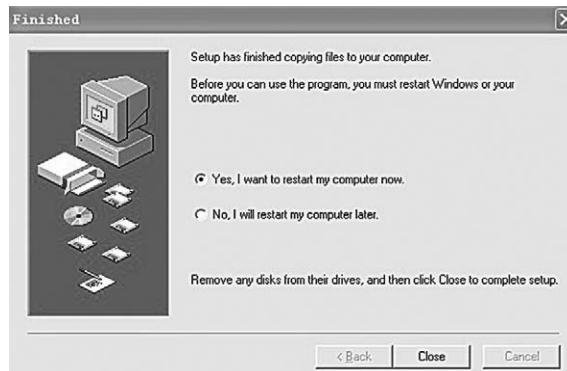


Figure 1.8


PRE-INSTALLATION PRECAUTIONS:

1. Use only the power adaptor that comes with the product. DO NOT attempt to substitute it with any other as other adaptors may cause damage to your unit.
2. Make sure the camera unit is mounted in an indoor environment where rain or other forms of moisture cannot get into it.
3. DO not touch or re-adjust the lens in any way. The focal point of the camera was pre-set at the factory. If you turn the lens you may interfere with the way the quality of the images are received.
4. DO not force the Pan/Tilt by hand
5. For any firmware upgrades or connection to any other external devices, please read all instructions within the installation CD.

2. SOFTWARE OPERATION

2.1 IP Camera Tool

Once you've mounted your IP camera, and installed the software, it is time to see if you can access it remotely.

Start by double clicking on IP Camera Icon  on your desktop. A dialog box will appear on your computer screen

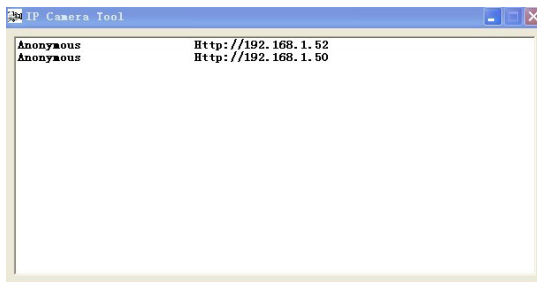


Figure 1.9

Note: The software is designed to automatically search for IP Camera servers over the LAN. One of the following 3 scenarios will present itself:

1. After about 1 minute, if the software does not find an appropriate IP camera server on the LAN, it will indicate "No IP server found" and automatically shut down the program.
2. After about a minute, the software will detect all the cameras on the LAN and each camera will be listed on your computer screen as shown in figure 1.9. If you're installing your first camera, it will naturally be the only one listed.

3. You will discover that several of the IP cameras installed on the LAN do not share the same subnet with the monitoring PC. This will be indicated by a prompt that will tell you: *Subnet does not match, double click to change*. Left click to choose the prompt and then right click to set the static IP address of the camera to the same subnet as your PC over LAN. (see figure 2.3)
- NOTE: If the subnet does not match, remember you can choose "Obtain IP from DHCP Server". The default of the camera is set to "Obtain IP from DHCP Server" which means it will automatically get a dynamic IP for you (see figure 2.2)

SIX OPTIONS ARE AVAILABLE VIA THE IP CAMERA TOOL

Choose the IP Camera list and right click on your mouse for the following options will appear in a window.

Options are: **Basic Properties, Network Configuration, Upgrade Firmware, Refresh Camera List, Flush Arp Buffer, About IP Camera tool.**

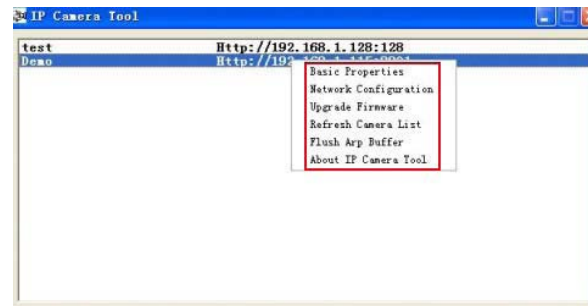


Figure 2.0

2.1.1.1 Basic Properties

Under Basic Properties you will find three options. 1) Device ID 2)System Firmware Version 3) Web UI version (see figure 2.1)

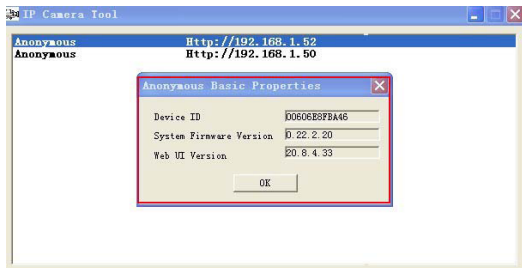


Figure 2.1

Device ID. This is the same ID as the one found on the sticker on the bottom of your camera. It is called the MAC ID. If there are many IP Cameras on your device list, you can cross check which camera is which by matching the sticker numbers of each camera with the ID numbers on the list. If, however, no ID number is shown on the IP Camera tool, it might be that it is being blocked by your firewall. Shut Firewall to allow access to your computer or as ID as a trusted site.

Note: There are two reference numbers. One is the Device MAC ID, the other is the WI-FI MAC ID, this too is on the sticker at the bottom of the camera. If this sticker is ever lost, you can recapture it by logging on to your host router and check the status, the numbers will be found there listed as the IP Camera WI-FI MAC ID.

2.1.1.2 NETWORK CONFIGURATION

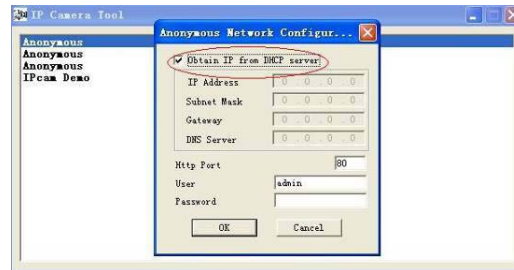


Figure 2.2

In this Window you can configure your network parameter. If you click in the window requesting an IP from the DHCP server, your camera will be a dynamic IP (to do this, your router must have a DHCP function and it must be on)

IP Address. Fill in the IP address assigned and make sure it has the same subnet as your gateway, your computer and your router. (the first three sets of numbers should be the same)

Subnet Mask. The default subnet mask for your equipment is 255.255.255.0

Gateway. Make sure the subnet number correspond to your PC's IO address.

DNS Server. Should be set with the same subnet numbers as the gateway.

Note: You can get subnet mask, gateway and DNS server numbers from your Router. Often the DNS is optional.

HTTP port. Default port number is 80 but you should plug in the port number assigned for your equipment (ie, 81.801.8001 etc.)

Password: No password.

NOTE: If prompt tells you "subnet doesn't match, double click to change," reset the IP address, subnet mask, gateway and DNS server numbers once again or enable "Obtain IP from the DHCP server."

2.1.1.3 UPGRADE FIRMWARE

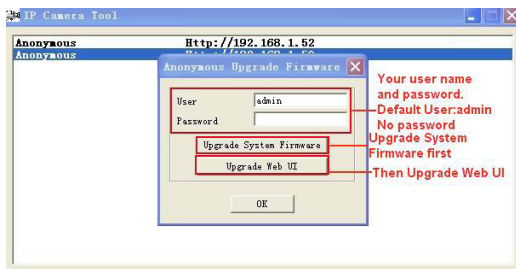


Figure 2.4

Begin by entering your correct User and Password to upgrade system firmware and UI. Please note that you must upgrade the system firmware first and the Web UI second or you could sustain damage to the camera.

Before downloading the firmware, make sure it is the correct and appropriate type for your camera. Follow all the instructions in the Read Me First instructions that came with your upgrade software.

NOTE: DO not upgrade freely. If your camera is working well, it is better to not upgrade. If you must upgrade please keep the camera on during the process, use the best wire mode and make sure you are connected to the network.

2.1.1.4 REFRESH CAMERA LIST

Refresh camera list manually.

2.1.1.5 FLUSH ARP BUFFER

In the event that you can search for the camera but cannot open the camera web page, try to use the ARP Buffer to open.

2.1.1.6 ABOUT IP CAMERA TOOL

Use to check both IP Camera tool and ActiveX control software versions.

2.2 CAMERA LOGIN

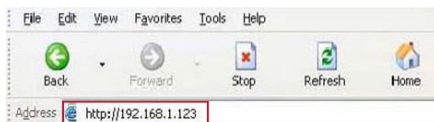


Figure 2.5

Camera access can be made through IP camera tool or using Internet Explorer,

Safari, Firefox or Google Chrome browsers. To do so, follow these procedures:

1. Double click the IP address of the IP Camera listed on your computer (see figure 1.9) Once you do this, whatever default browser you ordinarily use will automatically run and bring up the camera login interface.



Figure 2.6

(Note: Default user name: admin; Password: LEAVE BLANK)

2. If you choose to access the camera using the IE browser directly, simply type in the camera's IP address (for example if the address is 192.168.1.123 type that into the provided window.)

Once the Windows Security box comes up, input your correct user name and password.

The sign-in interface will pop up. See figure 2.7 for reference which user mode you'd like to use in order to access the camera. There are three to choose from:

1. Active Mode (for IE browser) available in iE6.0 or above (Please note; Internet Explorer will give you all options.)
2. "Server push mode" for user who wish to access with either Safari, Firefox or Google Chrome
3. "sign in mobile phone" for user who wish to access through their mobile devices.

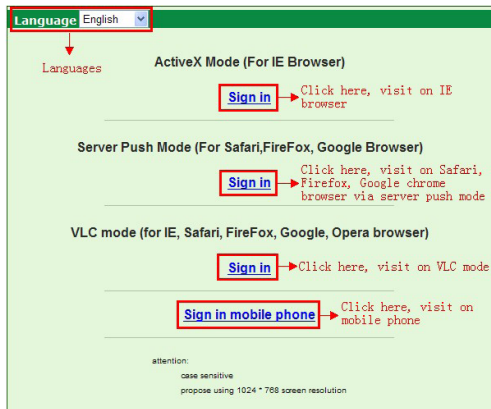


Figure 2.7

2.3 TO USE IE BROWSER TO GAIN ACCESS

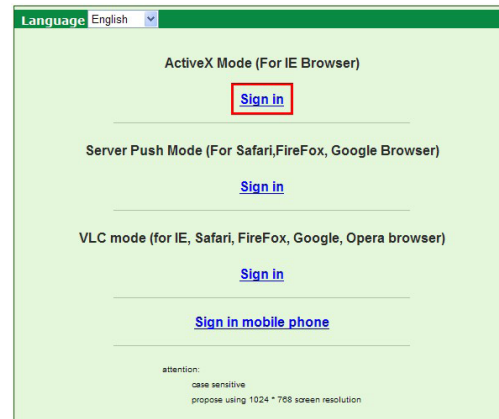


Figure 2.8

The first time you login to a camera, it is possible to get the ActiveX prompt with a box around it (as seen in fig. 2.8). In this case click this prompt first and choose Run Add-on. This is telling you to refresh and login the camera again. Once done, you will receive live video feed in the following windows:

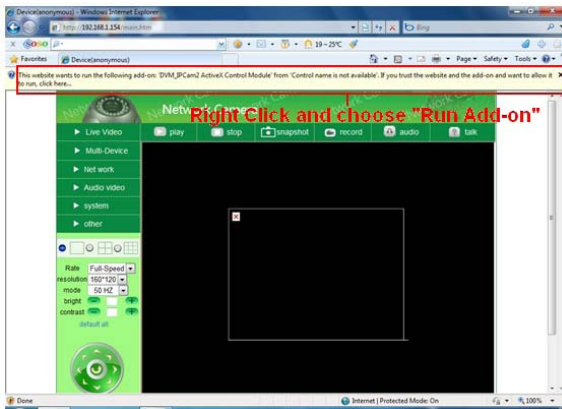


Figure 2.9

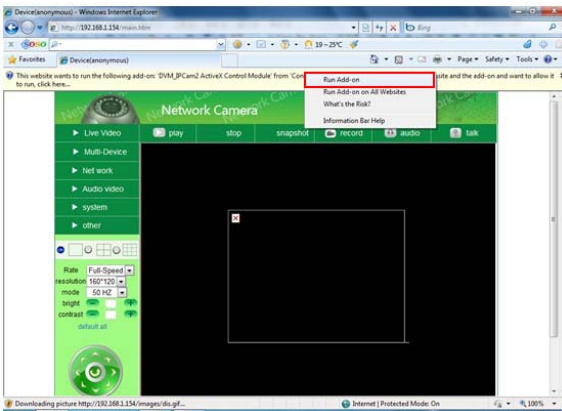


Figure 3.0



NOTE: If live video stream does not come up, but instead a red cross such as this appears on the screen or the screen goes black, follow the following steps:

1. Close your computer's firewall.
2. Change all the ActiveX settings to enable (including IE BROWSER, Tool, Internet options, Security, Custom Levels, ActiveX controls and Plug-ins). Critical to enable are:

Enable: Download unsigned ActiveX controls

Enable: Initialize all ActiveX controls not marked safe

Enable: Run ActiveX controls and plug-ins.

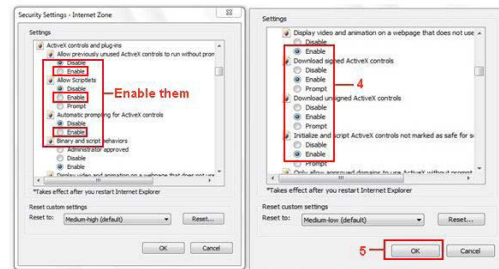
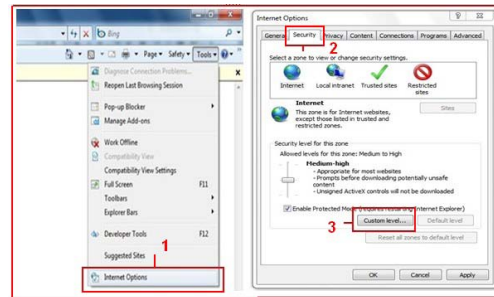


Figure 3.1

Here are some other things you can do if the video still does not appear.

1. Go to your computer's Start menu and go to Internet Explorer, choose internet attributes to enter, or go directly to your Control Panel, choose Internet Explorer and go to security settings. If the red box continues to appear and video does not appear after you've changed your security settings and if the security camera's LED is flashing yellow to indicate it is transmitting and you're still not receiving, try going back and changing your port number (see figure 3.2). You may use any port number except 80.

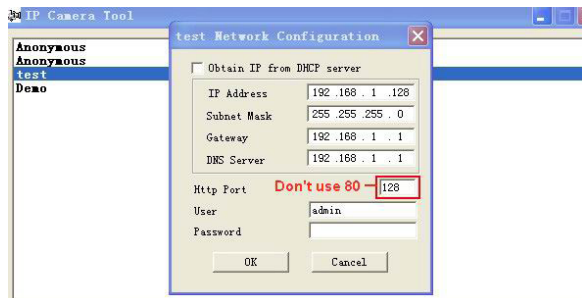


Figure 3.2

NOTE: Again, make certain the firewall and your anti-virus software is not blocking the ActiveX and its software. Close both firewall and anti-virus and try to access again.

2.4 SAFARI, FIREFOX, GOOGLE CHROME BROWSER ACCESS

If you choose the Server Push Mode (for the browser of your choice) and your Push Mode does not support ActiveX, revert to using the IE browser choice. (NOTE: ActiveX works best with Explorer, if you do not have Explorer or do not wish to use it, the Push Mode will allow you to use other browser methods.)



Figure 3.3

2.5 MOBILE PHONE ACCESS

Choose Mobile Phone Sign in and sign in with the appropriate information. If your mobile phone does not support ActiveX you will not get full access features. However, the IP Camera is designed to support full video access on such popular mobile devices as iphone, most Smart Phones, and 3G phones.



Figure 3.4

2.6 ACTIVE X MODE FOR IE BROWSER ACCESS

When you login the camera in ActiveX model you will be asked what level of user you are: Visitor, Operator, or Administrator. Each of these user types come with different levels of authority and usage privileges (see 3.11 for user settings, figure 8.5)

2.7 VISITOR STATUS

When you sign in as a visitor, yours is the lowest level of operation and is limited to certain channels. Our IE software will give a visitor access to up to color-coded 9 channels. They are as follows:



Figure. 3.5

- Click this one for main camera view only.
- Click this one to view four connected cameras at once.
- Click for views of 9 connected cameras at once.

NOTE: In order to view multiple cameras, you must first have set the Multi-Device Settings first (see 3.1 Multi-Device Settings)

Also, there are 9 color coded icons at the bottom of the UI to indicate the status of each device. They are as follows:
 Gray. Means no device is connected.
 Green. Means a device is connected on this channel and works well.
 Red. Means the device on this channel and is recording
 Yellow. Means a device on this channel but fails to connect to main device.

On Screen Display (OSD) settings.

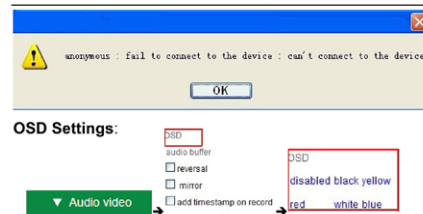


Figure 3.6

- Go to OSD settings and click on "?Audio/Video OSD,
1. set time and date and click time stamp to apply to video
 2. choose "disable" to clear any settings on OSD
 3. set text color you wish (i.e. black, red, white, etc.)



Figure 3.7

Rate and Resolution

Set rate or speed of frames per second from full speed to 1fp/5s (see figure 3.8)
 8) Resolution: Set the resolution to 160*120/VGA (640*480) QVGA (320*240) as in figure 3.9)

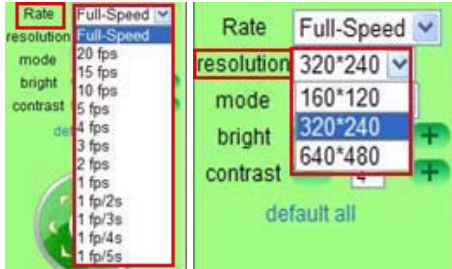


Figure 3.8

Figure 3.9

NOTE: You can reduce file size by setting the resolution lower, as in figure 3.9.

Top Menu



- Live Video (LIVE VIDEO)** Click to get live video. This is the only setting from which you can get right click operations such as play, snapshot, stop etc.
- play (PLAY)** Click when you want to play video, click again when you want to stop play.
- stop (STOP)** Click to stop live video. Click play to start it again.
- snapshot (SNAPSHOT)** Click to get instant snapshot of live action. It will stamp time and date if you choose to save.
- record (RECORD)** Click to start recording manually, red button will appear (SHOW BUTTON), Click red button to stop recording, Recordings will save to a file the file your set up for them (see figures 10.8 and 11.0)
- audio (AUDIO)** Click to listen to input sounds near camera. IP Camera has a built-in microphone. You can listen through the device your monitoring remotely or through earphones plugged into that device. When you click the icon to hear sound, icon will turn red, click it again and sound will stop.
- talk (TALK)** Click to use talk function. A microphone must be installed in your computer or other remote digital device. The camera will broadcast your words.

In order to listen to sounds in that area, speakers must be hooked up to the device you are monitoring from (see figure 1.2). Click on the Talk icon and it will turn red to indicate the talk mode is in operation. Click on it again when you want to stop talk function.

NOTE: All of the above are functions you may access as a visitor. If you request a function outside the visitor level of authority, a pop-up prompt will request user name and password (see figure 2.6). It will request this 3 times before you can login as a visitor again.

2.8 OPERATOR ACCESS

Login as an operator and you not only get all the functions allowed a visitor, but you also have access to the following functions as well:



Figure 4.1



Figure 4.2

Audio Buffer. Click here and window box will give you a choice of 1,2,3,4, or 5 seconds' buffer of audio. This will prevent dropouts, clicks, or pops.

Reversal: Click here and video image can be seen reversed (up or down; this particularly important when camera is mounted on ceiling).

Mirror. Click to see mirror image. Click again to return image back to normal.

NOTE: Both Reversal and mirror images can be preset to remain if camera is in a special position requiring a reverse or mirror image.

Mode, Brightness, Contrast

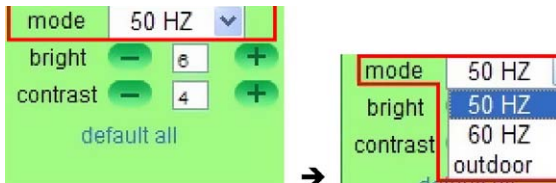


Figure 4.3

Mode: There is an optional mode for outdoor use of the camera. It is 50Hz/60Hz. It should be noted that camera is not recommended for outdoor recording, but if it is used as such, should be set to the 50Hz setting.

Brightness. Click +- to find the up or down value of brightness you desire.

Contrast. Click + - to find the up or down value if contrast you desire.

Default all: Click to return to factory settings.

NOTE: If you set up the camera on the network and you receive no video and the brightness and contrast setting do not appear, you can go back to default all to achieve video feed.

Pan/Tilt

Pan/Tilt Control



Figure 4.4

Click on and camera will pan (move from side to side) or tilt (go up or down) making at least one full pan/tilt cycle automatically.

Click to move up. You can make small incremental moves with small clicks or hold down to control the movement to the degree you wish.

Click to move down; use same methodology as Up icon.

Click to rotate camera up or down; click on to stop.

Click to rotate camera left or right; click on (SHOW ICON) to stop.

This icon activates IO output switch. Click on on/off.

PLEASE NOTE:

There are nine ways you can direct your camera. To enable this function, simply right click on live video and a translucent directional arrow will appear on the live video, then left click mouse to control the directional action. There are eight clockwise positions you can choose manually. If you click in the center, the camera will cycle through all pan/tilt directions automatically. Double click right mouse to exit function.

Preset Positions

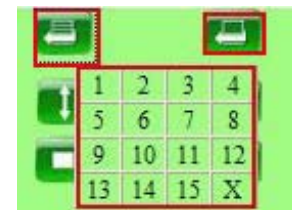



Figure 4.5

 Click to support 15 positions. Begin by rotating camera to the position you want. Then click the preset position icon and a pop-up will appear with 15 position slots. Keep moving camera to desired positions and set one at a time much the same way you'd preset the radio stations in your car. Then whenever you hit preset, the dialogue box with all the preset positions will appear and you can choose any of the fifteen positions you've preset by clicking on the appropriate number.

NOTE: If, as the operator, you request a control for which your level of authority does not exist, a pop-up interface will appear (see figure 2.6) requesting user name/password. Not until it requests 3 times can you return to operator login.

2.9 ADMINISTRATOR ACCESS

For all administrator settings, please see 3.1-3.22)

3 ADMINISTRATOR SETTINGS

When logged in as the Administrator you have access to all controls and functions of the camera which include the following functions visitors and operators cannot access:



Figure 4.6

3.1 MULTI-DEVICE SETTINGS



Polaroid IP Camera system software can support up to 9 devices on the network at one time.

3.1.1 Set Multi-Device on LAN

When you call up the Multi-Service Device window, you can view all the devices you have set up on the LAN. The first device is the default one. You can add up to 9 cameras for monitoring. To add more devices, click on the next device (i.e. 2nd device), then click on a camera in the device list. It will fill in the camera information; then add user name and password and then click. Add. After you've set all devices in this manner, click on submit.



Figures 4.8



Figures 4.9

3.1.2 Set Multi-Device on WAN using Port Forwarding.

Port Forwarding will allow you to view your camera live on the internet from anywhere, using your PC, smart phone or tablet device. To do this, start by making sure you have your router's manual in hand in order to understand some of the terms we are referring to. *Wait a second, you probably have no idea where it is, right?* Don't worry! To get and get the information you will need to Push Forward to your wireless devices, simply google : (brand of your router) manual, i.e. Belkin manual. Once you have this information handy, follow these five steps:

Write down the local IP address of your camera.. To find this, open IP Camera Tools (Mac users open IP Scanner Tool) and it will display the IP address of the camera as an http:// address (i.e. the numbers will appear in sets such as 192.168.1.10).

Log onto your camera and go to "Basic Network Settings" and change the HTTP Port to 8090. The default port is 80 but you do not want to use this number because it is a public port and can cause security problems. Port number 8090 is generally not used and is therefore safe to use
(THIS IS JUST A RECOMMENDATION, YOU ARE FREE TO USE OTHER PORT NUMBERS)

Note: if you have more than one camera, the port numbers should ascend accordingly, i.e. 8090, 8091, 8092 etc.)

Next write down your router's internet IP address. The easiest way to find this is to google: "What is my IP address" and go to the first link which pops up which

is usually whatismyipaddress.com. This address is how the world sees your router's identity, which means if you want to be able to access you camera from anywhere but home, you will need to know this address.

The fourth step is to log into your wireless router. To do this, enter the IP address of your router into your browser and then enter the username and password when prompted. If you are unsure of your router's name and password, refer to your router manual or view a list of the most popular default router IP addresses, usernames and passwords by Googling "Default Router Passwords and IP Addresses" and you will get that info for almost all routers. Go through the options on your router until you find the "Virtual Server", "Port Forwarding", or "port Mapping" option. (Your router's manual will explain this as well). Once you're able to access the Port Forwarding options for your router, you will then need to set the Local/Private IP address to your camera's local IP address, set the inbound port to 8090 and the outbound port to 8090 (you can change port numbers later). Make sure the type is either "Both" or "TCP. Save the configuration. (See examples for a couple of routers on page 40, 41 & 42).

To see if you are set up properly, open a browser and enter your external internet IP address into the address bar, Put a colon sign (:) then enter the port number e.g. 192.168.1.10:8090. That should bring you to your camera's login screen.

3.1.3 Upgrade Device Firmware

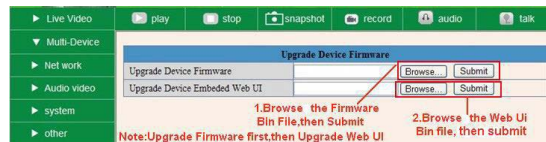


Figure 5.4

If you wish to upgrade your camera, you must first upgrade the Firmware, then upgrade Web UI (in that order). Click Browse to select the correct BIN file you want, then click submit to upgrade.

NOTE: Before performing any upgrade from a browser, make sure the IP Camera tool in your computer can locate the camera you wish to upgrade. Also note that power must be on during the upgrade and it has to be in wired mode. Upgrading freely without taking any of these precautions could do damage to the camera.

3.1.4 Restore Factory Settings

- Multi-Device Settings
- Upgrade Device Firmware
- Restore Factory Settings
- Reboot Device

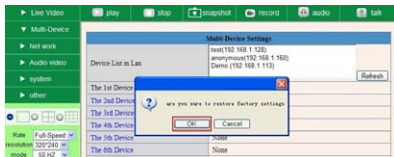


Figure 5.5

Clicking on Restore Factory Settings will cause a prompt to pop-up. Select OK and the camera will return to original factory settings and the device will reboot.

3.1.5 Reboot Device

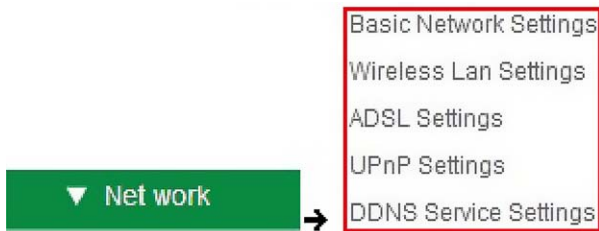
- Multi-Device Settings
- Upgrade Device Firmware
- Restore Factory Settings
- Reboot Device



Figure 5.6

3.2 Network Settings

Click on Network and it will cause the prompt below to pop-up:



3.3 Basic Network Settings

There are two places you can manually fix the camera's IP address. One, as we have mentioned earlier is the IP Camera Tool (figure 2.3) , the other is the Basic Network Settings window below:

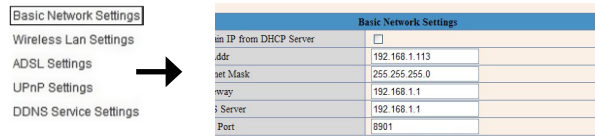


Figure 5.7

NOTE: The default setting for your camera is "Obtain IP from DHCP server. If you have this box checked, you will have to un-check it in order to change the IP address numbers.

If you do not know the Subnet Mask, Gateway, or DNS Server check the Local Area Connection Status of your computer. It will have all of this information. Then, do the following steps:

1. Go to Control Panel >Network Connections > Local Area Connections >Support > Details.
2. Find the local connection icon from taskbar, click on it, then choose Support and finally click on details.

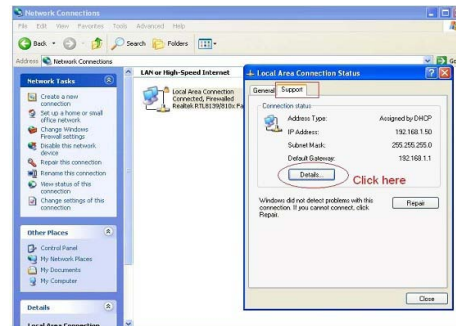


Figure 5.8

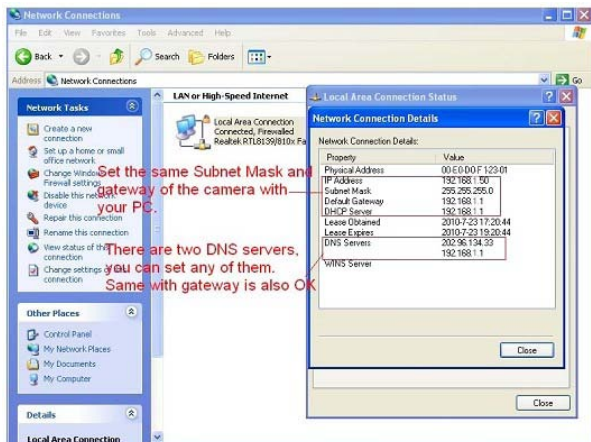


Figure 5.9

To find the DNS Server, follow similar instructions above as you did for Gateway. If your router supports DHCP function, choose "Obtain IP from DHCP Server" to get dynamic IP.

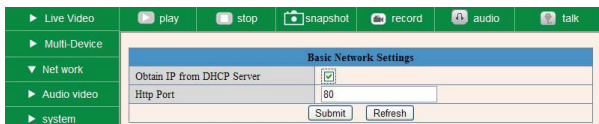


Figure 6.0

Http Port. In most cases, you may leave the value that comes up as is. If it does not work however, you may change the number to another value (i.e. 85)

3.4 Wireless LAN Settings

Basic Network Settings
 Wireless Lan Settings
 ADSL Settings
 UPnP Settings
 DDNS Service Settings

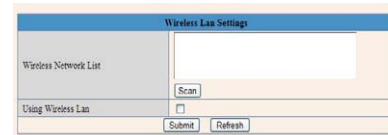


Figure 6.1

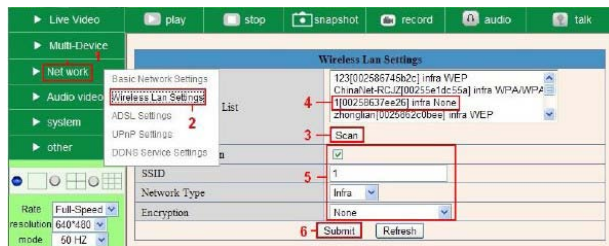


Figure 6.2

Note: Follow the instruction numbers as they appear in this figure.

1. You must have a wireless router.
2. Your wireless antenna must be installed on camera.
3. If your router is encrypted, you must ascertain and keep the key code.
4. To login in to a camera, click on Network, then go to Wireless LAN settings to set-up and then Scan. **Scan two times**, the WAN LIST will appear and you may choose the camera you wish to use.
5. If there is no encryption, simply click Submit.
6. If there is encryption, input the share key and click on Submit.
7. Wait about 30 seconds, until the camera reboots, and then unplug the network cable. The camera will now transmit wirelessly.

Wireless Lan Settings

Wireless Network List: 123[002566745b2c] infra WEP, 1[00256637ea26] infra None, zhonglian[0025662c0bee] infra WEP, t[a005c52b6934] infra None

Using Wireless Lan:

SSID: 1

Network Type: Infra

Encryption: None

Submit Refresh

Wireless router SSID list

Figure 6.3

Wireless Lan Settings

Wireless Network List: 123[002566745b2c] infra WEP, 1[00256637ea26] infra None, zhonglian[0025662c0bee] infra WEP, t[a005c52b6934] infra None

Using Wireless Lan:

SSID: 1

Network Type: Infra

Encryption: None

Submit Refresh

No encryption

Figure 6.4

Wireless Lan Settings

Wireless Network List: 123[002566745b2c] infra WEP, 1[00256637ea26] infra None, zhonglian[0025662c0bee] infra WEP, t[a005c52b6934] infra None

Using Wireless Lan:

SSID: 123

Network Type: Infra

Encryption: WEP

Authentication: Open System

Key Format: Hexadecimal Number

Default TX Key: 1

Key 1: share key here 64 bits

Key 2: 64 bits

Key 3: 64 bits

Key 4: 64 bits

Submit Refresh

Figure 6.5

3.5 ADSL Settings

When connect to the Internet through ADSL directly, simply enter ADSL user name and password obtained from ISP (see figure 6.6 and figure 6.7 below)

Basic Network Settings

Wireless Lan Settings

ADSL Settings

UPnP Settings

DDNS Service Settings

ADSL Settings

Using ADSL Dialup:

ADSL User: sx102356897236519

ADSL Password: *****

Submit Refresh

1.Enable it

2.Enter your user and password

3.Submit to finish

Figure 6.7

Figure 6.6

3.6 UPnP Settings

Click UPnP Settings to choose Using UPnP to Map Port

Basic Network Settings

Wireless Lan Settings

ADSL Settings

UPnP Settings

DDNS Service Settings

UPnP Settings

Using UPnP to Map Port:

Submit Refresh

Figure 6.8

All you have to do is click Submit in order to automatically allow your camera to utilize UPnP forwarding. If your router supports UPnP, you will not have to do port forwarding.

UPnP Settings

Using UPnP to Map Port:

Submit Refresh

1.Enable it

2.Submit to finish

Figure 6.9

NOTE: For UPnP, make sure your UPnP setting is on in your router. If your router does not support UPnP, it will indicate an error. In this case, we recommend you do port forwarding manually (see figure 7.4-7.9 for details).

3.7 DDNS Service Settings

Basic Network Settings

Wireless Lan Settings

ADSL Settings

UPnP Settings

DDNS Service Settings

DDNS Service Settings

Manufacturer's DDNS: Manufacturer's Domain

Third Party DDNS: DDNS Service: None

Submit Refresh

Figure 7.0

You may choose to use a Third Party DDNS. (i.e. for example from DynDs, Oray, 3322 etc.)

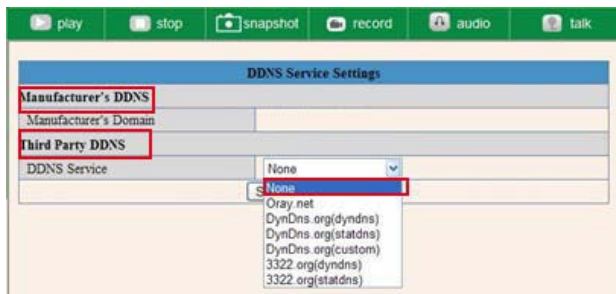


Figure 71

Third Party DDNS

For third party DDNS, choose server (i.e. 3322 or dyndns.org). See figure below:

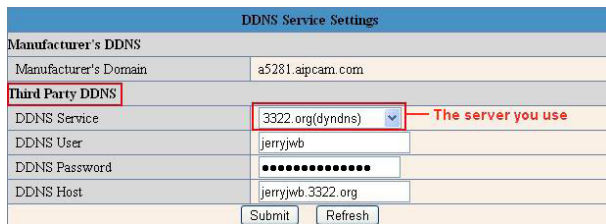


Figure 72

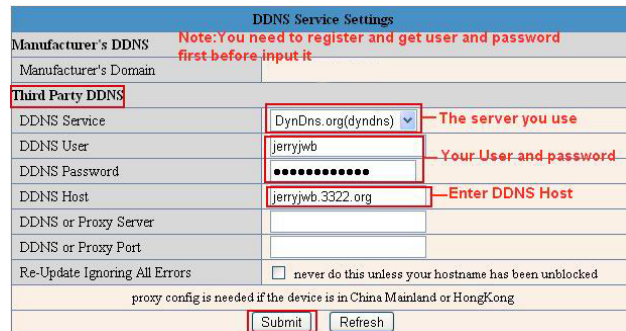


Figure 73

In order to do this you must have registered account before hand, have and kept the user name, password, host, and then input the information.

NOTE: If your camera default port reads 80, it must be changed to another number, click OK, and camera will reboot.

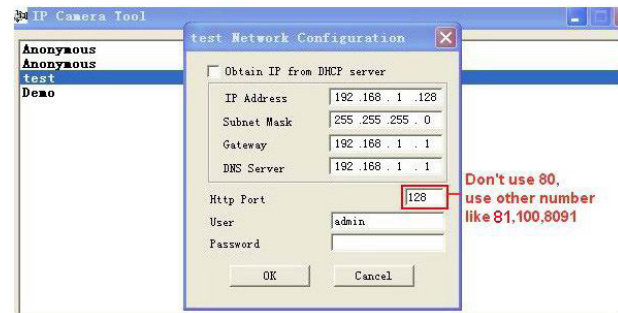


Figure 74

NOTE: Subnet Mask, Gateway, DNS Server should be the same as your router. (YOUR ROUTER GATEWAY AND PC ADDRESSES CAN BE FOUND IN YOUR COMPUTER BY GOING INTO YOUR CONTROL PANEL, GOING TO NETWORK

SETTINGS AND SEARCHING FOR THE NETWORK PATH, ONCE IT COMES UP YOU CAN RUN YOUR MOUSE OVER THE ICONS FOR PC AND GATEWAY TO ASCERTAIN YOUR SYSTEM ADDRESSES.)

Set Port Forwarding in the router. It is important to set the port forwarding in your router to the IP of your camera directly in order for the camera to work correctly. Because there are countless routers from around the world, it is impossible to provide a universal method of set up. The following samples however, do provide methods for several common router systems:

TP-LINK:



1. Login the router.
2. Choose "Forwarding" select "Virtual Servers"
3. Click the Add New Button (an example of the pop-up is below)

Add or Modify a Virtual Server Entry

Service Port: (000-XX or XX)

IP Address:

Protocol:

Status:

Common Service Port:

Figure 7.5

4. Fill in the service port (exception is 80), IP address of camera, then click SAVE.
- NOTE: The port and IP address should be same as camera.

BELKIN:

1. Login router
2. Choose "Firewall", select "Virtual Servers"
3. Input the port (except 80) and IP address, then click SAVE.

NOTE: The port and IP address should be same as camera.

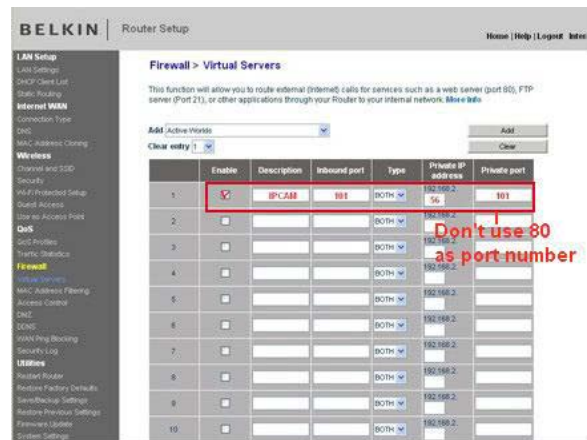


Figure 7.6

DLINK:

1. Login the router
2. Choose "Advanced", select "Virtual Servers"
3. Input the port, IP address, Protocol, then click SAVE.

NOTE: The public port and the private port should be the same as the camera's port; choose protocol to be "both"

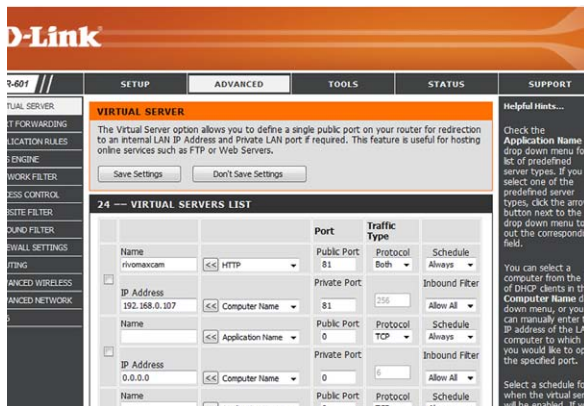


Figure 7.7

After all steps are complete you may use DDNS freely, or check the DDNS status from your camera and get the DDNS link for internet view. See figure below. Steps: Login, System, Device Info in that order.

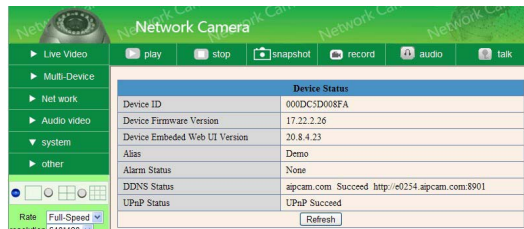


Figure 7.9

3.8 System Settings



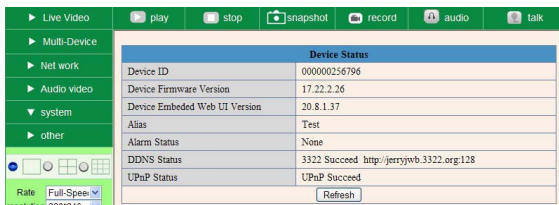
Figure 8.0

3.8.1 Device Info

This will give information about the following: Device ID, Firmware Version, embedded Web UI Version, Alias, Alarm Status, DDNS Status and UPnP Status.

Device Status	
Device ID	000DC3D008FA
Device Firmware Version	0.22.2.20
Device Embedded Web UI Version	20.8.4.23
Alias	Demo
Alarm Status	None
DDNS Status	aipcam.com Succeed http://e0254.aipcam.com:8901
UPnP Status	No Action
Refresh	

Figure 8.1



Figures 7.8

3.9 Alias Settings

Figure 8.2

You may assign your camera (or cameras) any name(s) you choose by entering in the Alias box.

3.10 Date & Time Settings

Figure 8.3

Figure 8.4

Set time and date for your camera. Make sure you're put in the Clock Time Zone for your country. You can choose to Sync with NTP Server (fig. 8.3) or Sync with PC Time (figure 8.4)

3.11 User Settings

You can have up to eight users on the *Polaroid* IP camera system. You can set up users names, passwords. The users can be listed as Visitors, Administrators, or Operators. Each is assigned a level of authority and permission to have access to the system with different levels of access. For example:

Visitor: See figure 2.7 details of usage at this level.

Operator: You can control the direction of the IP Camera and set parameters.

Administrator: You can set up advanced configurations of the IP Camera. (See 3.1.22)

Figure 8.5

3.12 PT Settings

Figure 8.6

1. Go center on boot. Automatically rotates camera at start.
2. PT (Pan/Tilt) Speed. Set Pan/Tilt Speed.
3. Upward patrol speed. Set cruising speed upward
4. Downward patrol speed. Set cruising speed downward.
5. Left patrol speed. Set cruising speed to left.
6. Rightward patrol speed. Set cruising to right.

NOTE: Value 0 is fastest speed. Value 10 is slowest. Recommended speed is 5.

3.15 Other Settings



Figure 9.0

Using the “other box, you can make settings for Motion Detection, Alarm. IO Linkage, Schedule, FTP Upload, Alarm Mail Alert, Record Path and more.

3.16 Mail Service Settings

You can set Mail Service Settings to send you an email when motion is detected in the camera range.

Mail Service Settings	
Sender	IP Camera@163.com 1.Sender mailbox must support SMTP
Receiver 1	IP Camera@163.com
Receiver 2	
Receiver 3	
Receiver 4	
SMTP Server	SMTP.163.COM 2.Enter SMTP Server for sender
SMTP Port	25 3.SMTP Port
Need Authentication	<input checked="" type="checkbox"/> 4.Enable it
SMTP User	IP Camera 4.Your user and password
SMTP Password	*****
6. Test it	<input type="button" value="Test"/> Please set at first, and then test.
Report Internet IP by Mail	<input type="checkbox"/>
	<input type="button" value="Submit"/> <input type="button" value="Refresh"/> 5.Submit before test

Figure 9.1

Sender. Make sure the senders mail box supports SMTP and does not enable either SSL or TSL encryptions.

Receivers. You can set up to four receives. There are no SMTP limitations.

SMTP. Senders should have SMTP Server.

SMTP Port. Sender’s SMTP port is usually “25”; but it could have its own special port number.

Authorization. SMTP needs SMTP user and password input and the then

authorization selection.

SMTP User. Input correct SMTP user; usually his or her full email address. Sometimes the address can be inputted without the suffix and just using the user name.

SMTP Password. Input correct password.

NOTE: Click Submit before going to TEST.

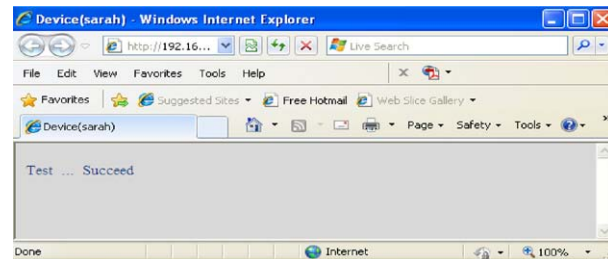


Figure 9.2

If clicking on TEST yields an error, recheck the information your entered to ensure it was all correct. Then make corrections and click on TEST again. Here are some possible problems:

- 1) Cannot connect to server.
- 2) Network error. Try again later
- 3). Server error.
- 4) Incorrect user or password
- 5) Sender is denied by server. Re-authenticate user and check again.
- 6) Receiver is denied by server. Anti-Spam privacy software could be blocking.
- 7) The message is denied by server. Again because of anti-span privacy software.
- 8) Server does not support the authentication mode used by the device.

At the bottom of figure 9.1, you will see a box for “Report Internet IP by Mail.” If you check it, you will receive the camera’s internet IP information via email. The camera must be on for this information to be transmitted. (For example, the IPCAM’s URL is http://121.213.109.69:1008)

3.17 FTP Service Settings

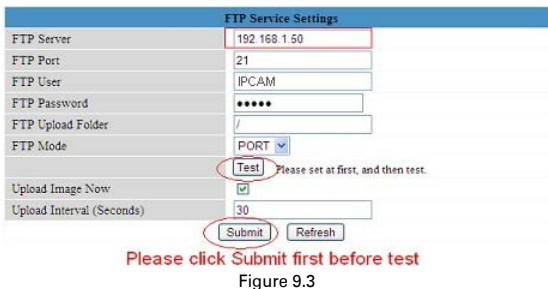
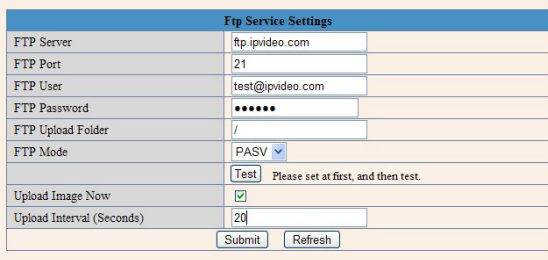


Figure 9.3



Figures 9.4

When you set up FTP Service, images will be uploaded to your FTP server when motion is detected in the monitoring area.

FTP Server. To set up FTP server on LAN, refer to figure 9.3. To set it up for use over the internet, refer to figure 9.4.

FTP Port. This is normally 21.

FTP Upload Folder. You must set up a folder that is capable of storing images. The camera will not create a folder by itself. You must be able to erase files within this folder.

FTP Mode. This will support both standard (POST) mode or passive (PASV) mode.

Upload Image Now. Select this box and images will be uploaded.

Upload Interval. Set the time interval you wish between image uploads.

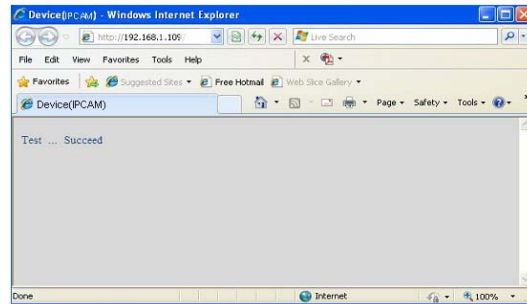


Figure 9.5

Here are some errors you could receive after your FTP set-up:

- 1) Cannot connect to server. Check to see if FTP set-up was correct.
- 2) Network error. Please try again later.
- 3) Server error.
- 4) Incorrect user or password. Please check whether user name or password is correct.
- 5) Cannot access folder. Make sure folder exists and is authorized.
- 6) Error in passive (PASV) mode. Make sure server supports PASV mode.
- 7) Error in (PORT) mode. Select (PASV) mode if device is behind a NAT box which may be blocking IP information.
- 8) Cannot upload file. Make sure your account is authorized.

Please check all parameters are set correctly. The format of image is 000DC5D008FA (IPCAM)_0_20101115152525_25.jpg. Please check if your FTP supports this format.

3.18 Alarm Settings

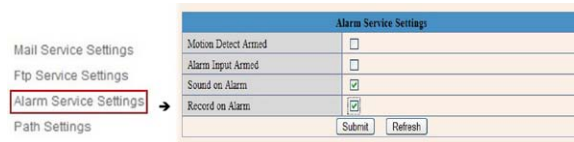


Figure 9.6

Enter Alarm Service Settings Page to set alarm to your specifications.

3.18.1 Motion Detection Armed

When you enable Motion Detection Armed, the camera will sound an alarm when motion is detected and it will record the incident.

Alarm Service Settings	
Motion Detect Armed	<input checked="" type="checkbox"/> → 1. Enable it
Motion Detect Sensibility	5 ↓ (the bigger number, the higher sensitivity)
Start the motion detection compensation	<input type="checkbox"/> (Reduce false alarms in case of the light mutation)
Alarm Input Armed	<input type="checkbox"/> → 2. Choose the sensibility
IO Linkage on Alarm	<input type="checkbox"/>
Alarm Notification by Htpp	<input type="checkbox"/>
Send Mail on Alarm	<input type="checkbox"/>
Call the preset position	disabled ↓
Upload Image on Alarm	<input type="checkbox"/>
Scheduler	<input type="checkbox"/>
Sound on Alarm	<input checked="" type="checkbox"/> → 3. Enable it optional
Record on Alarm	<input checked="" type="checkbox"/> → 4. Subait
<input type="button" value="Submit"/> <input type="button" value="Refresh"/>	

Figure 9.7

Should motion be detected, the Alarm Status will automatically switch to Alarm Detect Alarm.

Device Status	
Device ID	000DC5D008FA
Device Firmware Version	0.22.2.20
Device Embedded Web UI Version	20.8.4.23
Alias	Demo
Alarm Status	Motion Detect Alarm
DDNS Status	aipcam.com Succeed http://e0254.aipcam.com:901
UPnP Status	UPnP Succeed
<input type="button" value="Refresh"/>	

Figure 9.8

3.18.2 Motion Detection Sensitivity.

You may choose up to 10 settings of sensitivity for motion, 10 being the most sensitive. See figure below:

Alarm Service Settings	
Motion Detect Armed	<input checked="" type="checkbox"/>
Motion Detect Sensibility	5 ↓ (the bigger number, the higher sensitivity)
Start the motion detection compensation	<input type="checkbox"/> (Reduce false alarms in case of the light mutation)
Alarm Input Armed	<input type="checkbox"/>
IO Linkage on Alarm	<input type="checkbox"/>
Alarm Notification by Htpp	<input type="checkbox"/>
Send Mail on Alarm	<input type="checkbox"/>
Call the preset position	ad ↓
Upload Image on Alarm	<input type="checkbox"/>

Figure 9.9

3.18.3 Alarm Input Armed/ IO Linkage on Alarm

In the event that you want to connect external alarm devices to ward off or frighten intruders, you must choose Alarm Input Armed to enable an input device. For an output device, you must choose IO Linkage on Alarm.

Alarm Service Settings	
Motion Detect Armed	<input checked="" type="checkbox"/> → Enable it for motion detect
Motion Detect Sensibility	5 ↓ → Choose the motion detect sensibility
Alarm Input Armed	<input checked="" type="checkbox"/> → Enable it for alarm input
Trigger Level	High ↓ → Choose the trigger level
IO Linkage on Alarm	<input checked="" type="checkbox"/> → Enable it for linkage on alarm
Output Level	Low ↓ → Choose the output level
Send Mail on Alarm	<input type="checkbox"/> → Enable it
Upload Image on Alarm	<input type="checkbox"/> → Send mail on Alarm
Scheduler	<input type="checkbox"/> → Enable it
Sound on Alarm	<input checked="" type="checkbox"/> → Upload Image on Alarm
Record on Alarm	<input checked="" type="checkbox"/>
<input type="button" value="Submit"/> <input type="button" value="Refresh"/>	

Figure 10.0

In figure 10.0 you will notice a trigger box. There are two trigger level options you can set.

Trigger Level

Option:

High for closed circuit external alarm devices.

Low for open circuit external alarm devices. When an object moves close to camera, alarm will trigger.

When alarm is switching off, alarm will trigger as well.

Alarm Input Armed	<input checked="" type="checkbox"/>	1
Trigger Level	High	2
IO Linkage on Alarm	Low	
	High	

Figure 10.1

There are also two options for output level.

High : if the I/O pins work as switch for closed circuit devices.

Low: if the I/O pins work as a switch for open circuit alarm devices.



3.18.4 IO Pins for IO Alarm Linkage

IO PINS: 1) Output 2) Output 3) Alarm Input 4) Input (GND)

Input Pins. Can be used for 1-way external output sensors (i.e. Person Infrared Sensor for motion detection). When an external sensor is triggered, IP Camera will either send an email with a recorded picture or will control the internal relay output. You must use Pin3 or Pin4 for this and select Alarm.

Input Armed. When using the Inputs Pins in Figure 10.3, you are arming the device.

Output Pins. These will arm the device when you enable IO linkage on alarm for alarm over internet. You can also use (INFINITY ICON) and (SPLIT ECLIPTICAL ICON) to control IO output switch ON/OFF (see figure 4.4)

NOTE: All Pins work as switches only.

3.19 Send Mail on Alarm

When you click on the “Send Mail On Alarm” box, an email with picture will automatically be sent if alarm is triggered. (Make sure your Mail Service Settings are correct, figure 9.1)

NOTE: Each time an alarm is triggered, 6 snapshots will be sent via email. Each alarm will last for 60 seconds.

Upload Image on Alarm

Upload Image on Alarm	<input checked="" type="checkbox"/>
Upload Interval (Seconds)	0

Figure 10.4

Set Upload Image on Alarm to have all images sent to FTP file once alarm is armed.

Upload Intervals. You can set the intervals at which images are uploaded (in seconds). Please note the Total AlarmTime for each incident is 60 seconds.

Scheduler

When you arm your camera to alarm is up to you. You can set the schedule by days, Monday through Friday, divide each day into 24 hours and even subdivide hours into quarter. When you click on the times you want the camera armed, the section will turn blue to indicate your times. Click again to undo schedule and the field will return to original gray color.

NOTE: If you do not use the scheduler, the camera will alarm anytime motion is detected.

Scheduler	<input checked="" type="checkbox"/>	Enable it to set Scheduler																							
Day:	0	1	2	3	4	5	6	7	8	9	10	11	12	13	14	15	16	17	18	19	20	21	22	23	
Sun																									
Mon																									
Tue																									
Wed																									
Thu																									
Fri																									
Sat																									

Figure 10.5

Sound on Alarm

Whenever motion is detected, there will be a beeping sound. Click on enable to maintain the beep when alarm is going off or cancel it and no alarm will sound.

Record on Alarm

If you want the camera to automatically record when alarm goes off, you must enable Record on Alarm. If you do not, you must cancel Record on Alarm.

Sound on Alarm	<input checked="" type="checkbox"/>
Record on Alarm	<input checked="" type="checkbox"/>

Figure 10.6

Once an alarm has been engaged, the following will occur depending on your settings:

Status Light turns red and keeps on blinking

If you set Sound on Alarm, alarm beeps will be audible over a speaker or earphone attached to your computer .

If you set Record on Alarm, the camera will record the incident automatically for 60 seconds. You can then retrieve the image by going to your record folder.

If you set Sent Mail on Alarm, you'll receive an email of event (see figure 10.0)

If you set Upload Image on Alarm, images of the incident will be sent to your FTP server.

If the alarm goes off during time you set on the Scheduler, the camera will automatically send emails during the time frames you selected.

NOTE: Camera record for 60 seconds once alarm is triggered.

REC Automatically and Save to PC

If you've enable motion detection and an event has occurred, when you open the camera monitoring window, the recorded event will automatically be save to your PC.

3.20 Path Settings



Figure 10.8

In figure 10.8 you will see slots to set the record path for any images being sent to the PC from the Camera.

Record path. Set manually by clicking on record icon (SHOW REC BUTTON) to start manual record. The file you import from your browser will automatically be the one images are sent to.

Alarm Record Path. Here you may choose the file on your PC you want the alarm messaging to go to.

NOTE: If you could not set a path using Windows 7 or Vista, take the following steps:

First, add the IP address to the IE's trusted sites. The steps are IE browser to Tool to Internet Proper to Security to trusted sites to Add.

You can also run the IE as the administrator and input the IP address of camera manually (see figure 11.1).

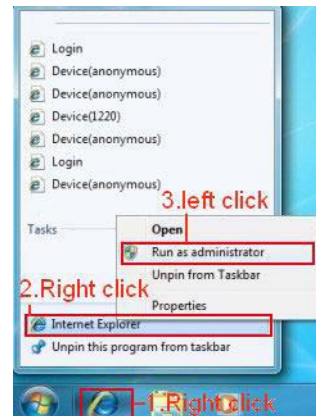


Figure 11.1

3.21 Server Push Mode (for Safari, FireFox, Google Browser)

Choose Server Push Mode, login camera, and the following will appear on your screen:



Figure 11.2

NOTE: Server Push Mode does not support ActiveX. That means functions that are controlled by ActiveX will not work in Server Push Mode. These functions include: Play, Stop, Record, Audio,

Talk, Multi-device settings, Path settings. You will not find these options if you use Safari, Firefox, or Google Chrome browsers.

3.22 Sign in mobile phone

For monitoring using a mobile phone, you must first choose Sign in mobile phone, login the camera, and the following will window and interface will appear on your computer screen:



Figure 11.3

NOTE: Mobile phone does not support ActiveX, therefore, Mobile phone only provides simple functions such as Resolution, Mode, Bright, Contrast, Pan/Tilt Control. Snapshot, Reversal, Mirror, and IO Linkage functions.

FREQUENTLY ASKED QUESTIONS.

DOES POLAROID IP CAMERA WORK ON MAC OS SYSTEMS AS WELL AS MICROSOFT WINDOWS?

Yes, the system is designed to work with both operating systems. You will find information in your CD folders concerning MAC systems, however, the set-up of a MAC computer should pretty much be plug and play if you follow the prompts as they come up.

IF I NEED ASSISTANCE WHERE CAN I GET IT?

If you encounter difficulties set-up or running your IP Security Camera outside the instructions in this manual, we suggest you contact your reseller. If they cannot resolve your issues, then please contact our technical support team at 877-836-1190 or at *Polaroid*, 2 Bergen Turnpike, Ridgefield, New Jersey.

FORGOTTEN ADMINISTRATOR USERNAME AND/OR PASSWORD?

Press RESET BUTTON and hold for 15 seconds. After 15 seconds, the user name and password will return to factory default which is username: admin, password: No password. At this point you may add in a user name and password of your choice.

IF YOU'RE TOLD SUBNET DOESN'T MATCH, DBCLICK TO CHANGE?

Once you click on the message, the settings box will appear. Click on the "Obtain IP from DHCP server (fig 2.2). It should obtain the information and set up automatically. If, however, it does not, go to the local area connection of your computer to get proper subnet and gateway of your computer and then change the camera numbers to these numbers exactly.

HOW DO I GET THE IP ADDRESS CONFIGURATION?

To see if your computer and camera share the same subnet, click My Computer, then Control Panel, then Network & Dial Up Connections, then LAN, then Attributes, then go to Internet Protocols (TCP/IP) and check the IP address and the Subnet Mask. Make sure the numbers here and the numbers for your camera coincide. Do this manually in the camera set-up box.

REASONS CAMERA CANNOT BE ACCESSED OVER INTERNET?

There could be several reasons: 1) ActiveX controller is not installed properly. Review Figures 2.9 through 3.1 of this manual. 2) Your firewall or anti-virus software is blocking the port. Change port number. See figure 3.2 for reference. 3) Port forwarding is incorrect (refer to figure 7.4 through 7.9 of this manual and make sure the settings are correct.

IP CAMERA TOOL CAN'T FIND CAMERA'S IP?

First check all camera connections. Make sure the DHCP in your router is enabled; do not enable MAC address filter. Make sure firewall and anti-virus software is not blocking camera by setting it as a "trusted device" in your firewall and anti-virus settings.

UPnP ALWAYS FAILS?

Sometimes your firewall or anti-virus software fails to allow the connection. It is recommended you try port forwarding manually in your router.

WHY ISN'T THE SHORTCUT TO IP CAMERA TOOL APPEARING?

If you use Windows7 or Vista it may be necessary to check if you installed it properly. You should be looking for an icon that takes you to C:/Windows/System32/IPCamera.exe, please direct the installation to C:/Windows/SysWOW64/IPCamera.exe

WHY CAN'T I CHANGE THE RECORD PATH?

Sometimes Windows7 or Vista will not allow you to change the record path. To override this problem you must add camera as a trusted site. Go to IE Browser, then to Tool, then click on Internet Proper, then click on Security, then click on trusted sites, then sites and then click on Add. YOU CAN ALSO RUN AS ADMINISTRATOR AND INPUT IP ADDRESS MANUALLY.

CAN'T FIND MULTI-DEVICE SETTINGS AND RECORD ICON?

Remember that these functions are only available using ActiveX. If your running your cameras on browsers such as Safari, Google Chrome or Firefox, these functions are not available to you.

CAMERA STILL WON'T CONNECT WIRELESSLY?

If after you set wireless settings and disconnect cable to router, you still cannot connect wirelessly, check that your settings are correct. See WIRELESS LAN SETTINGS for details. Double click the SSID, go to the Encryption Share Key, then Channel. Make sure they are all the same settings as your router. Note that your Share key should not include special characters. Use only a word and number are best. And make sure your MAC address filter is not on.

CAN'T SEE OTHER CAMERAS WHEN ACCESSING REMOTELY?

If you want to see all cameras in your system, you must make sure they are all added into your multi-device settings using DDNS name and port number. Use DDNS domain name in host check box, not camera's LAN IP. See details in this manual for Multi-Devices on WAN.

REMOTE LOG IN ONLY BRINGS ME TO BLACK SCREEN OR CODE?

If you were able to access your remote login page, your DDNS settings are correct. However, there may be internet speed problems especially if you are access on WI-FI.

YOUR USING ACTOVEX BUT STILL GETTING NO PICTURE?

First make sure you've clicked on ActiveX properly

PROBLEMS WITH NETWORK BANDWIDTH?

The picture quality you are getting is subject to several factors: Network bandwidth, PC performance, the number of visitors accessing at one time, or whether your using a switch or a hub for access (use of a switch is recommended for multiple cameras)

HOW DO I REGISTER A DDNS ACCOUNT ON WEB?

Go to <http://www.dyndns.com> and register.

WHY AM I GETTING FAILURE TO CONNECT TO DEVICE PROMPT?

This happens when you have multiple cameras. If it continues you should check the status of your camera. A yellow indicator light on camera should be on to indicate it is broadcasting.

WHAT ARE THE DEFAULT SETTINGS?

IP address: dynamic obtain
 Subnet mask: dynamic obtain
 Gateway: dynamic obtain
 DHCP: Disabled
 DDNS: factory DDNS or set third party DDNS
 Username: admin
 Password: No password

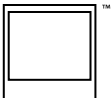
PLEASE NOTE: WE MAINTAIN A CALL CENTER FOR CUSTOMER SERVICE ISSUES AND FOR INSTALLATION GUIDANCE AND HELP. SHOULD YOU NEED OUR ASSISTANCE PLEASE CALL US AT

877-836-1190

Polaroid, Polaroid & Pixel, and Polaroid Classic Border Logo are trademarks of PLR IP Holdings, LLC, used under license. All other trademarks are the property of the respective owner, who has not sponsored, endorsed or approved this product. PLR IP Holdings, LLC does not manufacture this product or provide any Manufacturer's Warranty or support.

Distributed by:
 C&A Licensing, LLC
 2 Bergen Turnpike
 Ridgefield Park, NJ 07660 USA

© 2012 All Rights Reserved

MADE IN CHINA

Instantly recognizable. Instantly reassuring. The Polaroid Classic Border lets you know you've purchased a product that exemplifies the best qualities of our brand and that contributes to our rich heritage of quality and innovation.

